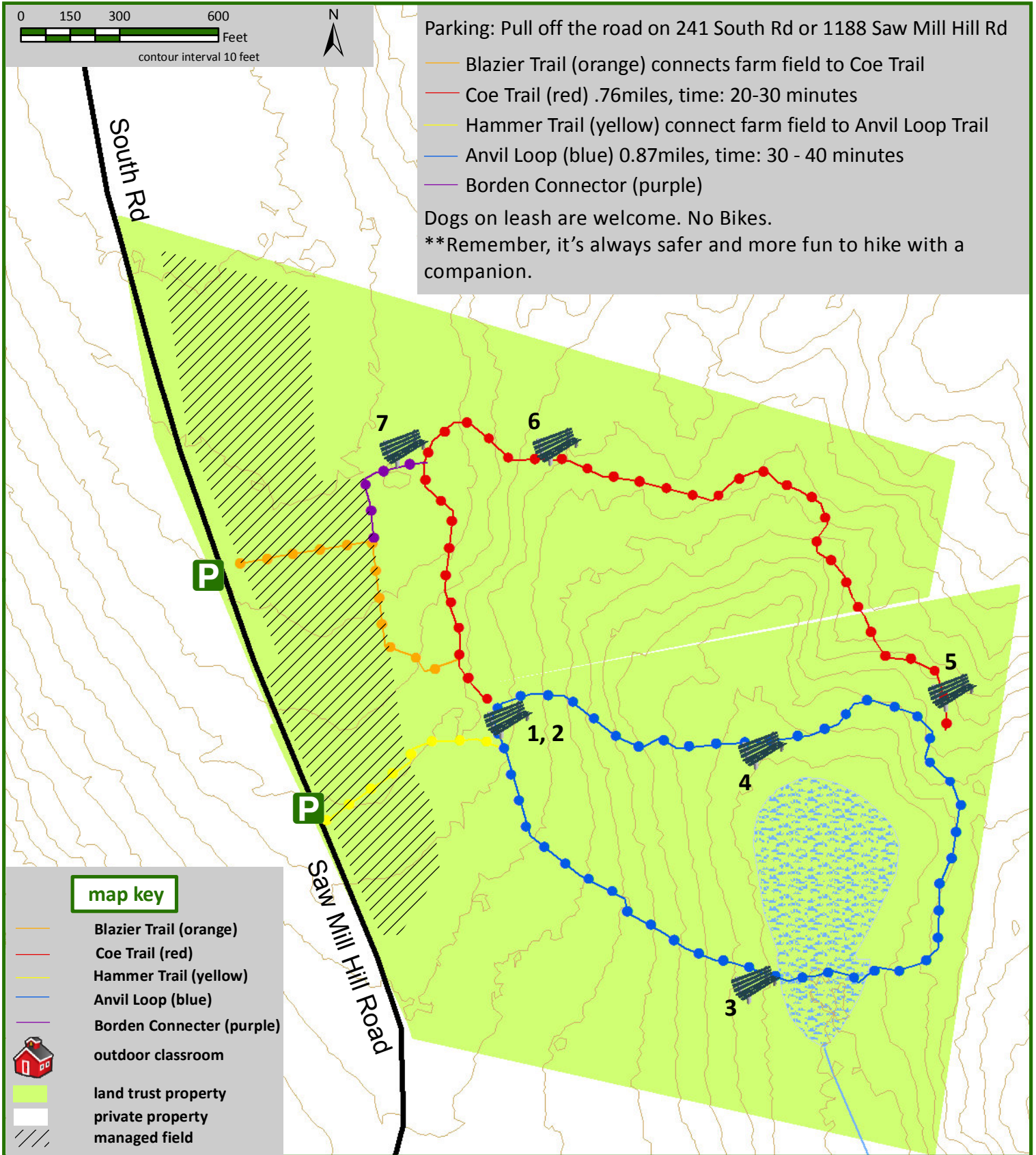


HOULIHAN WOODS AND MICHAEL GIORDANO TRIBUTE AREA TRAILS

PO Box 10 Winchester Center, Connecticut
 winchesterlandtrust@yahoo.com www.winchesterlandtrust.org

A PROPERTY OF THE WINCHESTER LAND TRUST - 118 ACRES



Parking: Pull off the road on 241 South Rd or 1188 Saw Mill Hill Rd

- Blazier Trail (orange) connects farm field to Coe Trail
- Coe Trail (red) .76miles, time: 20-30 minutes
- Hammer Trail (yellow) connect farm field to Anvil Loop Trail
- Anvil Loop (blue) 0.87miles, time: 30 - 40 minutes
- Borden Connector (purple)

Dogs on leash are welcome. No Bikes.
 **Remember, it's always safer and more fun to hike with a companion.

map key

- Blazier Trail (orange)
- Coe Trail (red)
- Hammer Trail (yellow)
- Anvil Loop (blue)
- Borden Connector (purple)
- outdoor classroom
- land trust property
- private property
- managed field

- walking /hiking
- picnicking
- wildlife viewing
- dogs on leash OK
- no bikes
- no hunting

This map was made by Weantinoge Heritage Land Trust from a template created by Northwest Conservation District. Source data obtained from CT DEEP and Winchester Land Trust. All boundary lines and trail locations are approximate. January 2019.